

Rovral Liquid Seed Dressing Stops Spot and Rot in Lupins

Rovral[®] Liquid Seed Dressing is a seed treatment fungicide for the control of brown spot (*Pleiochaeta setosa*) and the suppression of *Rhizoctonia* hypocotyl rot in lupins.

A Group 2 (Dicarboximide) fungicide, Rovral Liquid Seed Dressing contains 250 g/L iprodione.

It is a flowable formulation (oil based + blue dye) that should be applied at 100-500 mL/100 kg of seed (in a 600mL mix).

How Does Rovral work?

Rovral inhibits all phases of the development cycle of pathogenic fungi, including :

- spore germination
- Mycelial growth
- the development and production of spore organs.

The active ingredient is taken up by the roots of the germinating seeds and the hypocotyl picks up a protective coating as it emerges from the seed. Rovral has protective and some eradicant capability.

Symptoms of Brown Leaf Spot

Cotyledons and leaves:

Develop dark brown spots, then die and drop off. Leaves are distorted and small.

Stems:

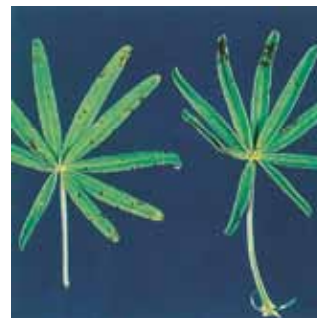
Small brown flecks that sometimes develop into cankers which kill the stem above the canker

Roots:

Dark brown lesions appear on tap and lateral roots. Can rot away completely causing the plant to wilt & die before the four- leaf stage



*Brown leaf spot on lupins.
Source: Grain Legume
Handbook (2006)*



*Pleiochaeta root rot on lupins
(caused by the brown leaf
spot fungus).*

How to Manage Brown Leaf Spot

1. Extended crop rotation
2. Stubble mulching (cereals)
3. Seed treatment fungicide (Rovral Liquid Seed Dressing)
4. Avoid late sowing date
5. Higher seeding rates
6. Sow disease free seed
7. Variety selection
8. Nutrition.

Symptoms of Rhizoctonia Hypocotyl Rot

Infected plants seem to grow normally early in the season, but suddenly wither and die when under stress.

Roots are poorly developed and distinct dark brown spots are visible, with few lateral roots. The tap root is brittle.



Roots show varying degrees of infection by Rhizoctonia.

Note the most severely affected have no lateral roots.



Rhizoctonia infection on hypocotyl of lupins.

Note red lesions on the hypocotyls.



Patches of stunted plants in a lupin crop caused by Rhizoctonia.

Source: Grain Legume Handbook (2006)

Fungicides that control anthracnose don't control brown spot, and vice versa. Therefore, a mix of Rovral Liquid + Thiram is recommended.

© Rovral is a registered trademark of FMC Corporation.

This publication is a guide only and no substitute for professional advice. Always read the label before use. FMC Crop Protection Pty Ltd bears no responsibility for the information contained within this publication. Product labels are available at fmc.crop.com.au © Copyright 2013 FMC Crop Protection Pty Ltd ACN 48 159 288 123